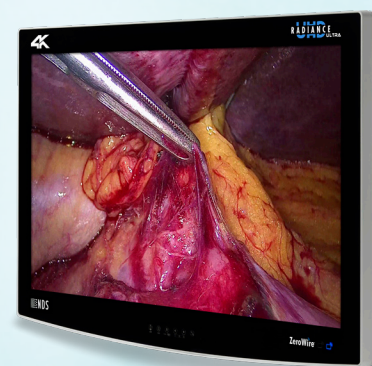




## **RADIANCE® ULTRA ZEROWIRE® 4K 32"**

- *Breaking new ground, the first medical grade 4K wireless imaging solution*
- *Low-latency performance with cable equivalent image quality*
- *Interference immune 60 GHz transmission ensures in-room containment*
- *All-in-one, dual-function, embedded transmitter and receiver*
- *Intuitive, memory enabled pairing, enhances ease-of-use*
- *Security encrypted signal ensures patient privacy*
- *Benefits from the Radiance Ultra's color accuracy and brightness*



**RADIANCE® ULTRA** **ZeroWire®**

### **EXPANDING THE POSSIBILITIES IN 4K VISUALIZATION, WIRELESSLY**

The ground-breaking ZeroWire 4K display represents a technological leap forward in OR imaging solutions. With the adoption of 4K in today's digital OR, ZeroWire 4K extends your imaging chain without the restrictions, safety concerns, and costs of a 4K cabling infrastructure. By integrating exclusive 60 GHz wireless technology into NDS's 4K imaging platform, a new gold standard in surgical visualization is attained.

ZeroWire 4K's 60 GHz technology delivers a robust and reliable turn-key wireless video system. Dual-functionality has been achieved by embedding both transmitter and receiver into each display. Once linked, a pair of ZeroWire 4K displays will auto-link after power cycles.

Beam steering antenna technology dynamically controls the wireless signal to avoid obstructions and optimize wireless performance even in the most challenging procedure room conditions. Free of perceivable latency or visible artifacts, the system provides the pristine 4K image quality that clinicians demand. The OR staff can benefit from enhanced safety and ergonomics by eliminating cables and enabling greater flexibility.

To experience the ultimate in cable-free wireless operation; combine the ZeroWire 4K display with the NDS ZeroWire Mobile stand. This combination eliminates the need for all cabling thus reducing room turn around time.

**Not Yet Commercially Available**

## TECHNICAL SPECIFICATIONS

### WIRELESS

Frequency Range	60 GHz Band (57-64 GHz)
Wireless Functionality	Transmit or Receive (Dual Function)
Wireless Video Inputs (In Tx Mode)	12G-SDI-1 & 2, HDMI-2 & 3*, DisplayPort-2
Video Output (In Rx Mode)	Screen-Clone on 12G-SDI-1 Out of Rx monitor
Systems Latency (Tx to Rx)	Less than One Frame (<16 ms at 60Hz)
Wireless Transmission Range	30 feet (10 meters) Maximum
Number of Pairs Per Room	Up to Two Monitor Pairs
Pairing Method	Memory Enabled Pairing
Patient Privacy Data Protection	256-bit AES Encryption
Transmitter/Receiver Mode Control	Auto-Set Based on Input Source
Transmitter/Receiver Mode	LED Indicators on Front Bezel

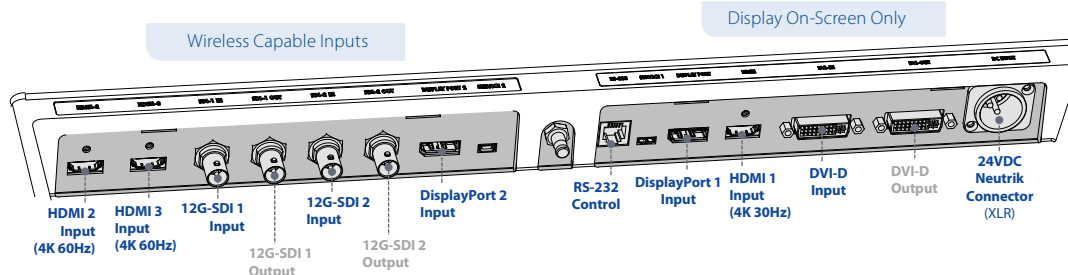
### IMAGE PERFORMANCE

Screen Size (Diagonal)	32.0 inches (813 mm)
Native Resolution (H x V)	3840 x 2160 (4K/UHD)
Aspect Ratio	16:9, UHD
Luminance	700 cd/m <sup>2</sup> (Typical)
Contrast Ratio	1350:1 (Typical)
Medi-Match™ Calibration	BT.709, BT.2020 Emulation
Number of Colors	1.07 Billion (10-bit)
Color Gamut	149% of BT.709, 79% of BT.2020
Response Time	8 ms (Typical)
Display Latency	Less than 5 ms (Typical)

### GENERAL

Input Power	24 Volts DC (Min. 21.6 Volts)
Dimensions (W x H x D)	30.7" x 20" x 3.4"/780 mm x 509 mm x 87 mm
Protective Front Panel	AR Coated, Chemically Strengthened Glass
Scratch Resistant Guarantee	Yes
Warranty	3 Years
Ingress Protection (IP Rating)	IP46 front, IP32 Rear
Mounting	200 x 100 mm VESA
Display Weight	32.0 lbs (14.5 kg)
Shipping Weight	45 lbs (20.5 kg)
Shipping Dimensions	36" x 9" x 29"/92 x 23 x 74 cm

### INPUT/OUTPUT CONNECTOR PANEL



\* 4K/UHD capable inputs also support HD resolutions

\*\* HDMI inputs support DVI-D signals up to 1080p via a DVI to HDMI adapter cable (not included)

CONNECTIVITY	SIGNAL TYPE	CONNECTOR	FUNCTIONALITY
4K/UHD Inputs*	12G-SDI-1	BNC x 1	Can be Transmitted to Rx
	12G-SDI-2	BNC x 1	Can be Transmitted to Rx
	HDMI-1 (1.4b)**	HDMI Type-A	Displayed on Screen Only
	HDMI-2 (2.0)**	HDMI Type-A	Can be Transmitted to Rx
	HDMI-3 (2.0)**	HDMI Type-A	Can be Transmitted to Rx
	DisplayPort-1	DisplayPort	Displayed on Screen Only
	DisplayPort-2	DisplayPort	Can be Transmitted to Rx
4K/UHD Outputs	12G-SDI-1	BNC x 1	Screen-Clone in Rx mode
	12G-SDI-2	BNC x 1	Re-drive Only
HD Inputs	DVI-D	DVI-D	Displayed on Screen Only
HD Outputs	DVI-D	DVI-D	Re-drive Only
Control Input	RS-232 Serial	RJ-11	Serial Command Interface

### ACCESSORIES

Included Accessories 24 VDC Power Supply, region appropriate AC power cord, Download Information for User Manuals

Optional Accessories DC Power Extension Cables:  
10 ft (90Z0287), 50 ft (90Z0288)  
RS-232 Adapter Cable - DB-9 to RJ11 (90Z0245)  
DVI Out to 5 Volt DC Cable (90Z0274)

### REGULATORY COMPLIANCE

ANSI/AAMI ES60601-1, CAN/CSA C22.2 No. 60601-1, EN 60601-1, EN 60601-1-2, Conflict Minerals, FCC Part 15 Class A, ICES-003, VCCI V-3, MDD Class I, FDA Class II, FDA 510(K) Cleared, including RF module model SII-SK63102 and SII-SK63101, (RE-D) Directive 2014/53/EU, EN 302-567 V2.0.24, EN 301 489, CE, FCC ID: UK2-SII-SK6310 and UK2-SII-SK63102, IC ID: 6705A-SIISK63101 and 6705A-SIISK63102, 007AA106

### ORDERING INFORMATION

90R0130 Radiance Ultra ZeroWire 4K 32"

### CONTACT INFORMATION

#### NDS Global Headquarters

5750 Hellyer Ave  
San Jose, CA 95138 USA 🇺🇸  
www.ndssi.com  
+1 408 776 0085  
info@ndssi.com

#### Europe

**Novanta Europe**  
Parking 57-59  
85748 Garching  
Germany 🇩🇪  
+49 89 31 707 100  
info.novanta-europe@novanta.com

#### Asia Pacific

**Novanta Japan**  
East Square Omori  
6-20-14 Minamioi  
Shinagawa-ku  
Tokyo 140-0013, Japan  
+81 3 5753 2466  
info@ndssi.jp

#### NDS China Office

Oriental Media Center  
Suite 2302, Tower C  
No.4, Guang Hua Road  
Chao Yang District  
Beijing, 100026, China  
+86 10 8559 7859  
info@ndssi.com.cn

NDS Quality System  
ISO 13485 FDA Registration #2954921  
Document 72S0004 rev A